

Pacific

**PACIFIC SOLAR
HEAT PIPE WATER
HEATER SERIES**

**PACIFIC SOLAR NON
PRESSURE SERIES**

**PACIFIC SOLAR NON
PRESSURE COLLECTORS**



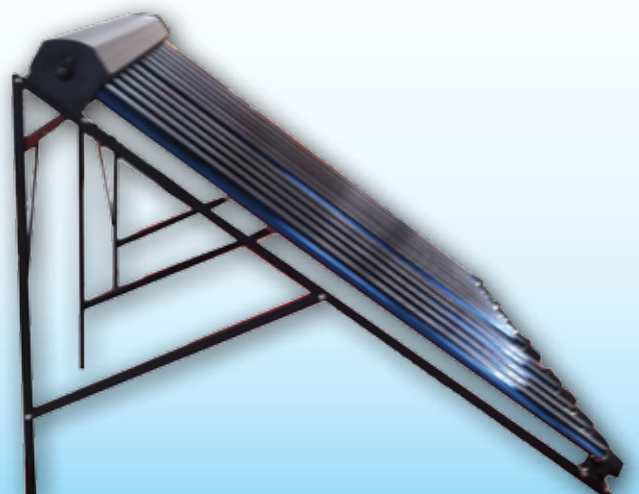
Pacific Solar Non Pressure Collectors



Pacific Solar Non Pressure Series



Pacific Solar Split Collector



INTRODUCTION

Pacific Solar supplies a Complete Product Range in Solar Thermal for about 10 years. Solar energy is radiant energy that is produced by the sun. The sun provides us with energy for generating hot water and space heating (environment control) the whole year. With innovative solar technology, we can make use of solar energy all year round.

Pacific Solar split solar collectors are SABS approved.

Advantages:

- Easy-installation
- Well integration with buildings
- Wide application area
- High performance, low heat loss
- High Quality

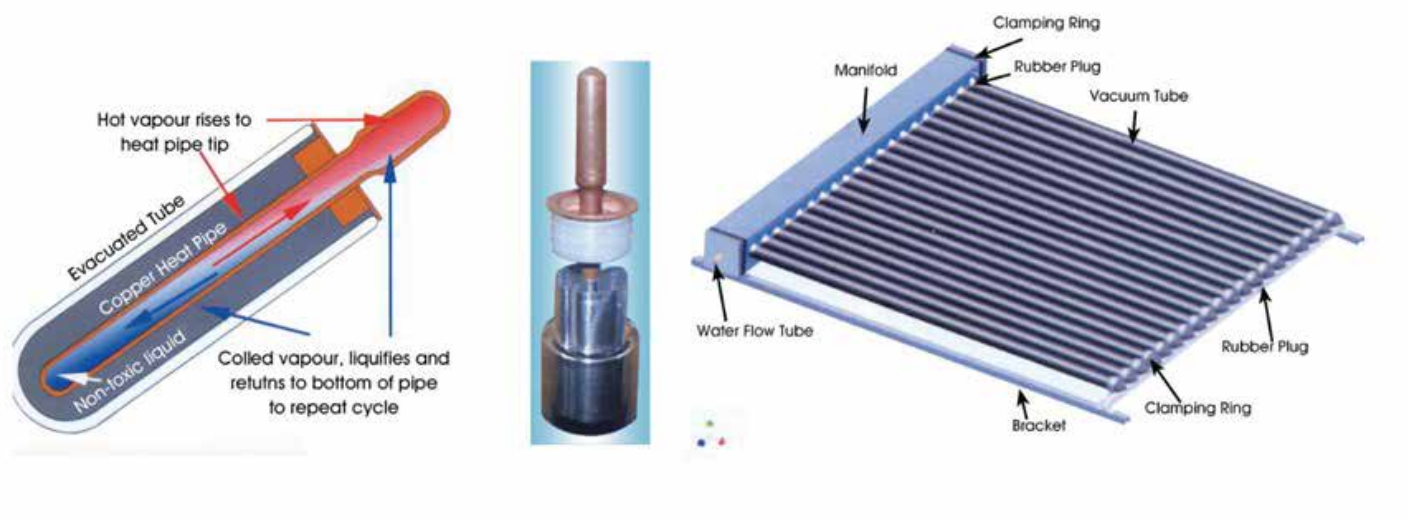


DIMENSION & LOADING QUANTITY

Product Code	BOX SIZE (MM) (L x W x H)		PRODUCT SIZE (MM) (L x W x H)	CAPACITY (60°C)	GW (KGs)	QTY	
						20FT/	40FT
PSH-12	Manifold	1130 x 180 x 210	1090 x 1630 x 1260	110L	50	136	317
	Frame	2040 x 140 x 145					
	Heat pipe tube	1930 x 275 x 255					
PSH-18	Manifold	1610 x 180 x 210	1570 x 1630 x 1250	150L	72	86	201
	Frame	2040 x 140 x 145					
	Heat pipe tube	1930 x 355 x 190					
PSH-24	Manifold	2090 x 180 x 210	2050 x 1630 x 1250	220L	95	77	180
	Frame	2040 x 140 x 145					
	Heat pipe tube	1930 x 275 x 255					

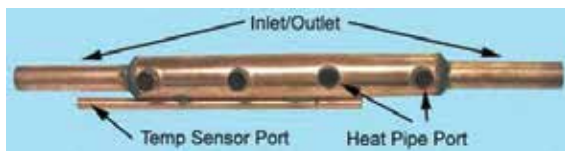
SPECIFICATIONS

Items	Unit	PSH-12	PSH-18	PSH-24
No. of Evacuated Tubes		12	18	24
Grid Dimensions (Length x Height x Depth)	m			
Gross Surface Area	M ²			
Aperture Area	M ²	1.19	1.78	2.38
Working Pressure	KPa	600	600	600
Max. Working Overpressure	KPa	800-1000	800-1000	800-1000
Max. Stagnation Temperature	°C	300	300	300
Insulation Material	rock wool			
Fluid Channel Material	copper			
Glass Tube Material	borosilicate glass 3.3			
Selective Absorber Coating Material	Alu/SS/Cu			
Glass Tube (dia.ext./dia.int./wall thickness/tube len.)	mm	58/47/2.2/1800		
Manifold/Frame Material	Aluminium			
Rubber Seals/Rings	UV stabilized high temperature silicon rubber			



PACIFIC SOLAR COPPER HEAT EXCHANGER:

Material: copper
 Diameter: 35mm
 Inlet/Outlet Dia.:22mm
 Thickness: 1mm



PACIFIC SOLAR HEAT PIPE:

Head Dia.:14mm Length: 60mm Thickness: 0.8mm
 Body Dia.:8mm Length: 1670mm Thickness: 0.6mm
 Aluminum Fin: single piece
 Transfer Fluid: pure water and acetone

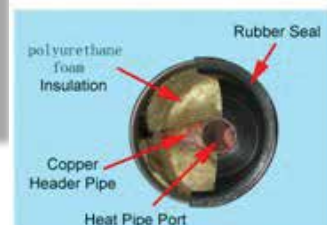
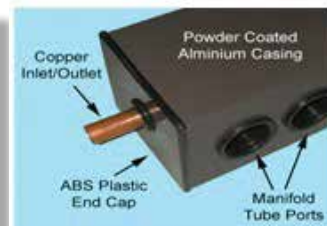
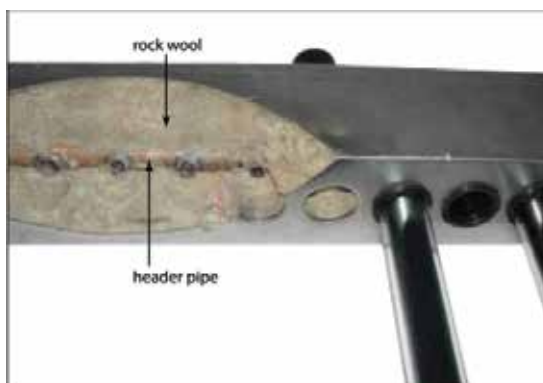


Rock Wool:

Polyurethane foam insulation, protect heat from loss
 Thickness:

Rubber Seals and Rings:

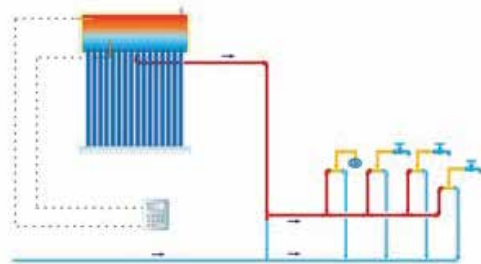
UV stabilized
 high temperature silicon rubber



Non pressure solar geysers

Scope of delivery

- *Tank
- *Aluminum brackets
- *Evacuated tubes
- *Floating tank



Installation types

- *Pitched roof
- *Flat roof

Adjustments and benefits

- *SABS approved
- *Cost-effective solar water heating solution
- *Long operating life time but low in maintenance costs and repair requirement
- *Short payback period on investment

Performance characteristics

- *High energy yield and low heat loss due to the high vacuum of the evacuated tubes and PU insulation
- *High-quality stainless steel in the inner tank to continuously maintain a good water quality

Specification

Series number		CA58-1813	CA47-1518	CA47-1524
Tank capacity	l	115	150	200
Material inner tank	material/mm	Stainless steel 0.6mm	Stainless steel 0.6mm	Stainless steel 0.6mm
Material outer tank	material/mm	Painted steel 0.4mm	Painted steel 0.4mm	Painted steel 0.4mm
Insulation	material	Polyurethane	Polyurethane	Polyurethane
Inclination	degree	30	30	30
Aperture area	m ²	1.3	1.2	1.6
Gross area	m ²	1.87	2.05	2.68
Foot diamention	mm	1037*1909	1367*1641	1787*1641
Foot area	m ²	1.97	2.24	2.93
Type of evacuated tubes	mm	58*1800	47*1500	47*1500
Thickness of evacuated tubes	mm	2.2	2.2	2.2
Evacuated tubes	no	13	18	24

Scope of delivery

*Evacuated tubes based on the thermos flask principle

*Manifold *Evacuated tubes

Installation types

*Pitched roof

*Flat roof



Adjustments and benefits

*Long operating life time but low in maintenance costs and repair requirements *Quick and easy installation *Short payback period on investment *Customized product solutions

Performance characteristics

*High energy yield and low heat loss due to the high vacuum of the evacuated tubes and PU insulation *High-quality stainless steel in the inner tank to continuously maintain a good water quality

Specification

Series number		CA 47-1550	CA 58-1812	CA 58-1830	CA 58-1850
Inner tank	material/mm	SUS304/0.6	SUS304/0.6	SUS304/0.6	SUS304/0.6
Outer tank, side and bottom frames	material	Aluminum alloy	Aluminum alloy	Aluminum alloy	Aluminum alloy
Inlet & Outlet dimension	mm	25	25	25	25
Grid Dimension (L*H*D)	m	1.84*3.08*0.15	1.90*1.14*0.15	1.94*2.47*0.15	2.08*3.68*0.15
Aperture area	m ²	3.3	1.2	3	5
Evacuated tube	mm	47*1500	58*1800	58*1800	58*1800
Thickness of tubes	mm	2.2	2.2	2.2	2.2
Gap between the tubes	mm	70	80	80	80
Evacuated tubes	no.	50/horizontal	30/Vertical	30/Vertical	60/Vertical
Max. working pressure	Mpa	0.05	0.05	0.05	0.05
Max. working temperature	Celsius	95	95	95	95



PACIFIC TECHNOLOGIES (PTY) LTD
71 Austin St
Glen Austin
Midrand
Tel: 011-314 8888
Fax: 011-314 3336
www.pacificsolar.co.za
E-mail: wallys@pacificsolar.co.za
eddym@pacificsolar.co.za

DEALER DETAILS/STAMP